

DATA MINING YOUR CHILD

WHAT YOU CAN DO TO STOP IT

SELL



Beliefs of Family

Behaviors & Attitudes

Sexuality

Worldviews

Spirituality

Socioeconomic
Status



COURAGEISAHABIT.ORG

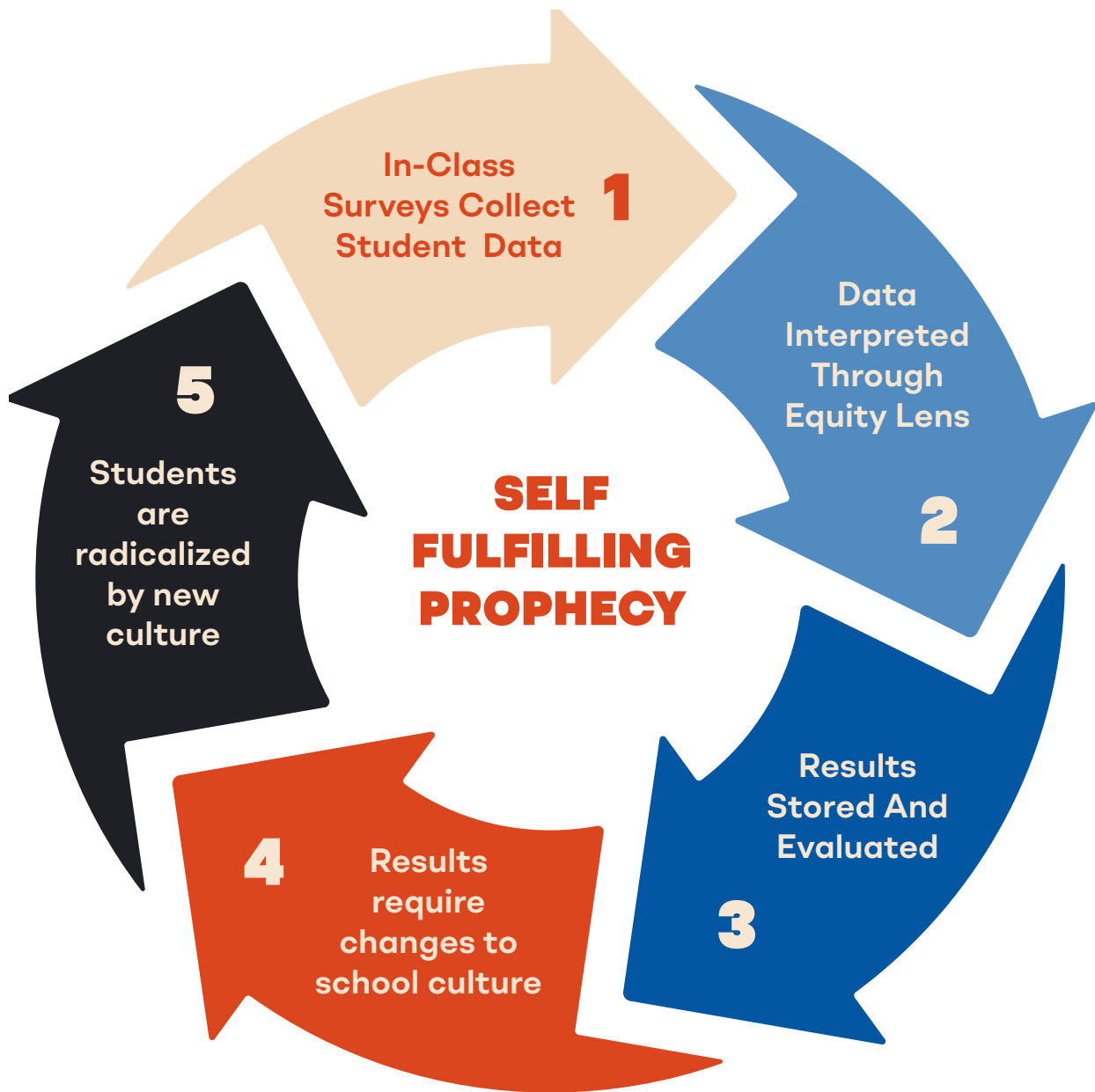
Gender Ideology

WHAT IS THE
ONE THING
ANY PARENT CAN DO
TO HELP STOP INDOCTRINATION?

OPT OUT

***OPT YOUR CHILD OUT
OF IN-CLASS SURVEYS
THIS SCHOOL YEAR***

BREAK THE CYCLE



- In-class surveys ask leading and biased questions.
- Collected data is interpreted through an “equity lens” of systemic racism & oppression producing biased results.
- Continues to indoctrinate students based on biased results.

How They Get The Data

SURVEYS

What Are Surveys?

- Social Emotional Learning (SEL) categorizes every student as "at-risk" of needing behavioral intervention.
- Allows schools to use surveys as a way to collect mental health data on students.
- Allows schools to conduct mental health evaluations on every student.
- Data is stored and used to create psychological profiles for each student.
- Data is monitored and continuously updated creating a permanent profile of your child.

Why Surveys?

- Surveys use leading questions to gain access to student's attitudes, beliefs, and values on subjective and divisive issues such as race, biases, gender ideology, and identity issues.
- The surveys are used as a way to continue the goal of creating a "social justice" culture in schools and continue policies that lower academic achievement.

OPT OUT

What They Do With The Data

INTERPRET & STORE

Interpret through an "Equity Lens"

- All mental health data collected is interpreted through an "Equity Lens" that believes America is racist and oppressive.
- Data generates individual scores based on conformity to the social justice belief system.

Where does the data go?

- President Obama's *Education Race to the Top* program awarded over \$4 billion to states agreeing to build or improve Statewide Longitudinal Data Systems (SLDS) that store psychological profiles of students.
- SLDS are continuously offered grants and incentives to expand their systems & capabilities.
- Statewide systems can eventually link nationally and then globally.
- Similar to Social Credit Scores in China
- Data will not only impact their education but in the near future will likely have a life-altering impact when they enter postsecondary education, the workforce, the military, exercise their constitutional rights, etc.

OPT OUT

What About PRIVACY LAWS

What you need to know.

- The Family Educational Rights and Privacy Act (FERPA) was originally a strong bill that blocked any school from disclosing Personally Identifiable Information (PII) from a student's educational records to any non-school official without parental notification or consent.
- In 2008 and 2009 the bill was amended and consequently left useless by allowing schools to share data with third party companies and organizations.
- Medical and counseling records included in your child's education records are not protected by the Health Insurance Portability and Accountability Act (HIPAA).
- The Protection of Pupil Rights Amendment (PPRA) protects students from having to reveal personal information without parental consent IF it is required, funded by the federal government, and collects data such as political affiliations and religious beliefs.
- Most surveys given to students are NOT required and therefore are not protected by PPRA.
- Schools are only required to notify parents of a survey being given and allow parents to opt their children out.
- Schools often slip this information in with multiple forms or handbooks in the beginning of the year to meet federal requirements and often goes unnoticed by parents.
- PPRA gives you the right to stop the data mining of your child but you have to enforce it.

CALL TO ACTION

Opt Your Children Out

- Complete the form provided
- Forward to other parents

Here's How

Most effective form of delivery is in-person but email works too!

OPTION 1 - Fill Out Form and Email to:

1. School principal, vice principal, superintendent and teacher
2. Also "cc" every member of your school board including the district superintendent
3. Request confirmation the Opt-Out Form was received
4. Follow-up again if there is no response

OPTION 2 - Fill Out Form and:

1. Schedule an in-person meeting with your school's principal and present the Opt-Out Form
2. Follow-up the meeting with an email, re-attach the Opt-Out Form, and send to same recipients as listed in #1 and #2 under Option 1.

Every Parent Can Do This!

**YOU HAVE NO OBLIGATION TO COMPLY
WITH THESE IN-CLASS SURVEYS**

APPENDIX A

DID SOMEONE SAY YOU CAN'T OPT OUT? THAT'S A LIE

HERE'S WHAT TO DO:

1. Send an email to all the people we listed on Page 7 including the state education board members.
2. Paste this link in your email: [PROTECTION OF PUPIL RIGHTS](#)
3. Ask this question in the email, *"Is it your position that I cannot opt my minor child out of in-class SEL surveys and data collection?"*
4. Add at the end of your email: *"If I do not receive a reply within 3 days then I expect my child to be given an alternative assignment during surveys. If I discover my child is given data collection surveys, I'll be forced to seek legal counsel."*

MAKE THEM PUT IT IN WRITING

APPENDIX B

THE FOLLOWING ARE SUPPLEMENTS FOR FURTHER EDUCATION

[SEL BLOODLINE](#)

[SURVEY SAYS](#)

[TRAUMA INFORMED PRACTICES](#)

PARENTAL OPT-OUT FORM

I, _____, as parent and/or legal guardian of _____, a minor child, hereby exercise my right under the US Constitution and laws of the State of _____, to direct the upbringing and education of my minor child, as follows:

1. **I DO NOT CONSENT** to my child's participation in any opinion survey, personal analysis, evaluation, questionnaire or any other form of data collection that reveals or attempts to affect, or references or relates in any way to my child's attitudes, habits, traits, opinions, beliefs or feelings concerning: curriculum, political affiliations, religious beliefs or practices; mental or psychological conditions; sexual behavior or attitudes, sexual activity, sexual orientation; gender identity; or illegal, antisocial, self-incriminating or demeaning behavior. For the avoidance of doubt, my child is not allowed or permitted to partake in any survey, including curriculum centric and/or opinion in nature, without parental written consent.

Parent and/or Legal Guardian

Printed Name

Signature

Date

School Administrator

Printed Name

Signature

Date

